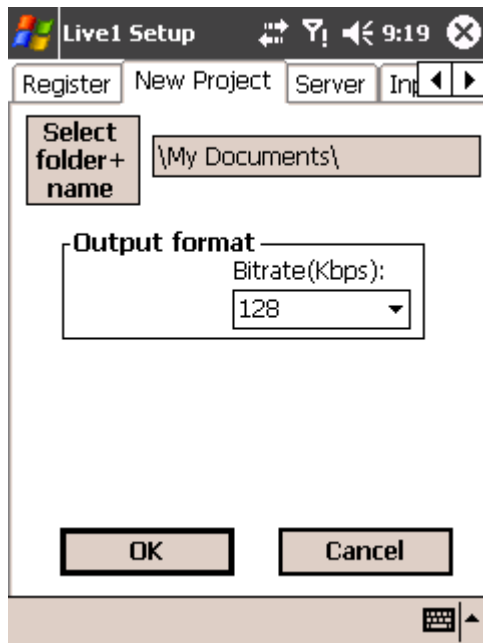


NEW PROJECT



START SETUP IN YOUR PROGRAMS FOLDER

Select page New Project

EXPLANATORY FIELDS AND BUTTONS

Select folder+name

Enables you to select the default folder and name of a new project as well as the default project name that Luci starts with.

Output

Bitrate (Kbps)

The bitrate is adjustable. The sample frequency is ALWAYS 48 kHz, even if a PocketPC can only record with 44.1 kHz maximum. Luci contains sample rate converters that are automatically activated when necessary during recording and playback without you having to do anything. Possible bit rates are: 32, 48, 56, 64, 80, 96, 112, 128, 160, 192, 224 and 256 kbit per second (mono).

Go to adjust the next page or press OK to save and leave Setup.