

GO LIVE



Start Luci Live one in your programs folder

You will now enter the main 'Go Live' tool that you use to work with.

EXPLANATOR FIELDS AND BUTTONS

Name this live event

Tap on this field and you can type in the 'song'-title that will appear in all of your listeners internet radio player

OUT Level-meter

This is the level-meter of the outgoing signal. Including a peak-hold.

No file loaded

If you load a file for playing while broadcasting, its name will appear here. Now it's only telling you that you have no file loaded yet.

Default00

The name that will be used when you make a recording.

00m:00s

The length of the current recording in minutes:seconds

Furthermore you see 2 big buttons and 2 smaller buttons:

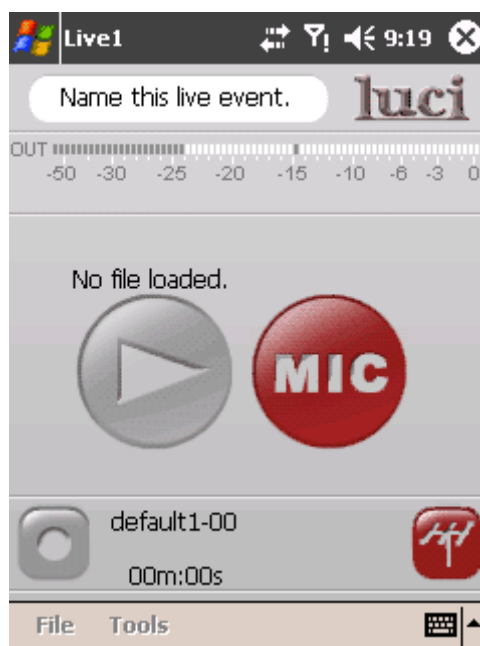
- The big buttons are the 'Play-button' (shown in the OFF-state here) for playing a pre-recorded project or file and a 'MIC-button' to activate the Microphone (internal or external, shown in the OFF-state here).
- The smaller buttons are a record button (shown in the OFF-state here also) to start recording and an 'Antenna-button' (shown in the OFF-state here) to connect to your internet radio-server.



Connect to your internet radio-server

Press the 'Antenna-button'. Live one will try to contact your internet-radio server you have setup with Luci Live one Setup. While doing so, half of this button will flash until a connection is made, then the whole button will be lit.

If no connection can be made, flashing will stop after a while and the button will not be lit. Try again and / or contact your program producer back at the radio station.



Press the MIC-button to go live

Speak into the mic and be careful with what you say....

Anyone who tunes in to your frequency / station can now hear you...

Choose a different Station

If you have predefined several Station-profiles in Luci Live setup you can choose the menu-item Tools → Station

A small window appears with all stations in a list. Choose one and press Ok to switch over to that station.

