

INSERT PRE-RECORDED MATERIAL WHILE LIVE



You can play pre-recorded material while you are on the air

For this you must first load a single file or a complete Luci-project to play. If you load a luci-project you will be able to play the whole cliplist i.e. all files of that project.

To load a project choose menu File → Open project for playing
Or to load a single file choose menu File → Open file for playing

After you have chosen the file called 'My Interview00' for instance the name will appear above the 'Play-button' and the total recorded time of this file will appear at the bottom left of this button.



Add pre-recorded files while broadcasting live

Go live by pressing the MIC-button.

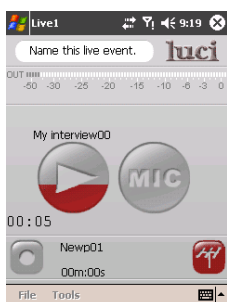
After a short live introduction you can now add the pre-recorded file by pressing the 'Play-button'. You will now see that the MIC is switched off automatically until the playing of the pre-recorded file is finished. Then it will switch on again automatically. *)

Watch the time-indicator at the bottom left of this button. It will start to count down and the 'Play-button' will gradually 'run empty' (see next screenshot).

If you want to interrupt the transmission of the pre-recorded file: press the 'Play-button' again, or press the 'MIC-button' in order to immediately switch over to live broadcasting yourself

You can of course also transmit only pre-recorded files without actually broadcasting live yourself.

*) *Luci Live two will feature mixing possibilities so that you can broadcast live while hearing pre-recorded material in the background.*



Watch the time-indicator at the bottom left of the 'Play-button'. It is counting down and the 'Play-button' will gradually 'run empty'.

5 Seconds left and then this file has been transmitted completely