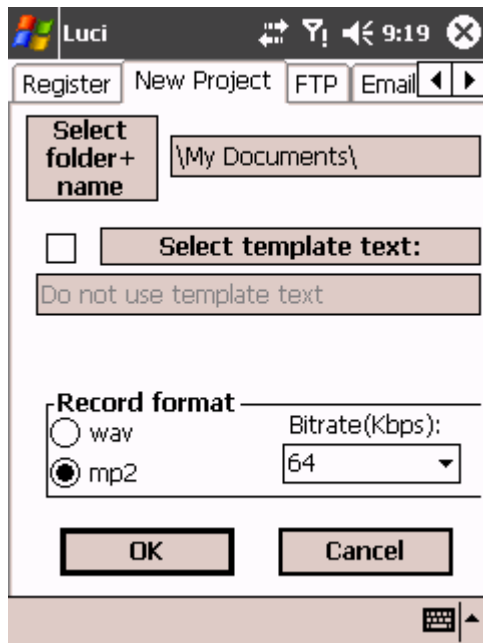


NEW PROJECT



START SETUP IN YOUR PROGRAMS FOLDER

Select page New Project

EXPLANATORY FIELDS AND BUTTONS

Select folder+name

Enables you to select the default folder and name of a new project as well as the default project name that Luci starts with.

Select template text

You can choose a default text-file that Luci reads to pre-fill the text-editor with when you create a new project. You can choose a text-file or XML-file. If you choose an XML-file, Luci will publish an XML-file instead of a txt-file.

Record Format

WAV or MP2

You can choose to record in Windows WAV-format or compressed mp2, the bit rate for which you can set next to it. If you select wav, then an mp2 file will actually be published to the ftp server in accordance with the bit rate that has been set by you. However, the recording on the PocketPC will be saved in uncompressed wav-format.

Bitrate (Kbps)

The mp2-bitrate is adjustable. The sample frequency is ALWAYS 48 kHz, even if a PocketPC can only record with 44.1 kHz maximum. Luci contains sample rate converters that are automatically activated when necessary during recording and playback without you having to do anything. Possible bit rates are: 32, 48, 56, 64, 80, 96, 112, 128, 160, 192, 224 and 256 kbit per second (mono).

Go to adjust the next page or press OK to save and leave Setup.