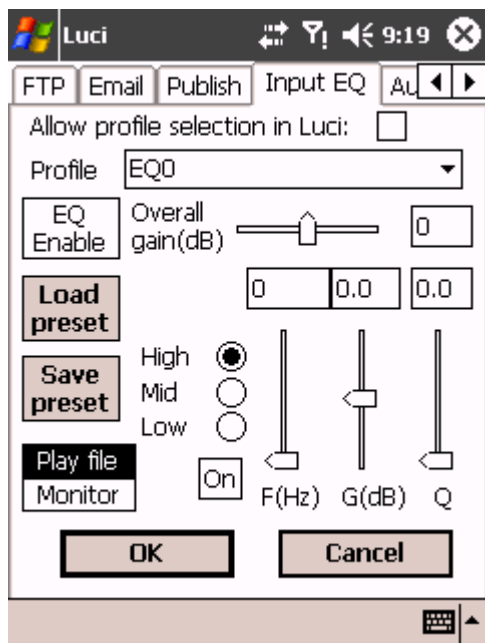


## INPUT EQ



START SETUP IN YOUR PROGRAMS FOLDER

### Select page Input EQ

The 'Input EQ' enables you to perform some equalizing during recording so you can improve the frequency-response or sound-quality of any PocketPC. We also added support for saving and loading presets, so you can use equalizing for already known PocketPC's.

Check [www.luci.eu/downloads.html](http://www.luci.eu/downloads.html) for available EQpresets.

To set or adjust the EQ yourself you have the ability to play a prerecorded un-EQ'd wav-file, while you are adjusting the EQ:

First you use LuciSetup to enable Luci to record a wav-file ('new project'-tab) and no Input EQ (deselect 'EQ Enable'). Start Luci, create a new project and record a test-file while you are speaking into the microphone you are going to use, the recorded file will be called 'default00.wav' for instance. Quit Luci and start LuciSetup, go to the Input EQ and press 'Play file', you can choose any wav-file you have recorded earlier, but for this example choose 'default00.wav'. The recording will be played continuously, so you can now set the EQ to improve the quality of the recording. Be sure to select 'EQ Enable' and press 'On' for every band you want to use.

### ADDITIONAL EXPLANATORY FIELDS AND BUTTONS

#### High – Mid - Low

There are 3 parametric bands available: low, mid and high. You can individually switch On or Off each band.

#### EQ Enable

Here you can switch On or Off the EQ all together.

Go to adjust the next page or press OK to save and leave Setup.