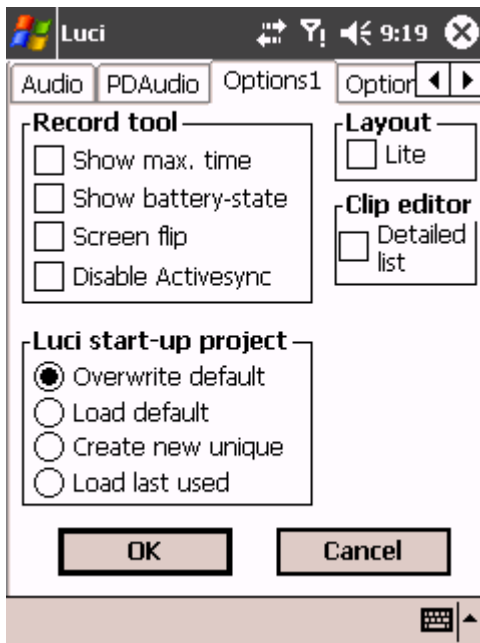


OPTIONS 1



START SETUP IN YOUR PROGRAMS FOLDER

Select page Options1

The Options tab enables you to switch On the display of several features of Luci.

EXPLANATORY FIELDS AND BUTTONS

Record tool

In this group you can change options for the Record-tool :

Show max. time

View the Maximum recording time.

Show battery-state

View the battery-state.

Screen flip

If you mark this - when your screen is in portrait-mode - Luci will switch the Record tool screen to upside-down mode during recording. This is practical when you use the internal microphone situated on the bottom of the PDA.

Disable Activesync

If you mark this, Luci will shut-down Activesync automatically before making a recording so it will not interfere with the recording. ActiveSync can slow down your PDA considerably which in turn can cause a recording to have drop-outs.

Luci start-up project

When Luci starts up a project, you have 4 options to choose from.

Layout: Lite

If you check this, Luci will start with only the record-tool and the publish feature available. This enables you to let Luci be used by an unexperienced user.

Clip-editor view *

In the 'Clip-editor'-tool you can choose to see more detailed information about each clip in the list. Shown below.

Go to adjust the next page or press OK to save and leave Setup.



* Clip-editor in detailed view

You can see the:

- o Name
- o Length of the clip in minutes and seconds
- o Time and date of the original recording
- o Storage location and file-name of the original recording