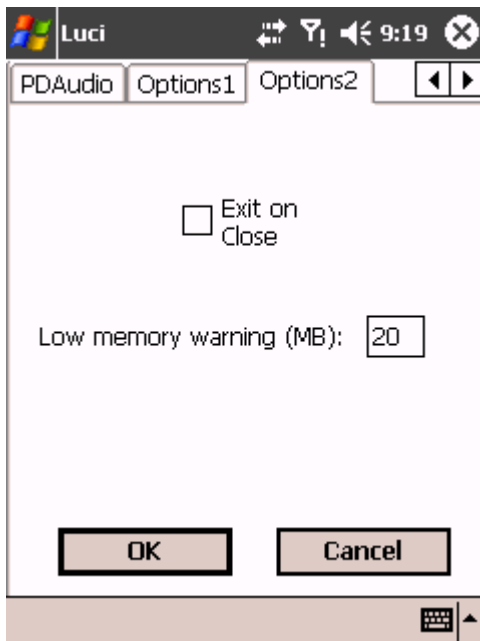


OPTIONS 2



START SETUP IN YOUR PROGRAMS FOLDER

Select page Options2

EXPLANATORY FIELDS AND BUTTONS

Exit on Close

Normally, on a PDA, if you click on the X in the upper-right corner of a window the window will not close but go into the background. If you want Luci to really exit and free up precious memory then, mark his box and Luci will exit when you press the X.

Low memory warning (MB):

Free memory can be monitored in Luci. You can define a low memory point in with this option. When Luci detects no more free memory available then this, a warning appears which also allows you to soft-reset the device then (after saving project). When memory is running low, the whole PDA can slow-down considerably.

What is low? Look at the free memory in settings/memory/main/program. Luci needs 4MB, so if you don not plan to use many other applications together with Luci, subtract an additional 4MB for other programs and try that.

So, if you have 25 MB free, set the low memory-point at $25-4-4=17$ MByte. This will make sure that no other applications are eating up too much memory (4MByte max in this example). You might think that 17 Mbyte is a bit too much, but it is better to be safe than sorry when you make that precious recording.

Go to adjust the next page or press OK to save and leave Setup.