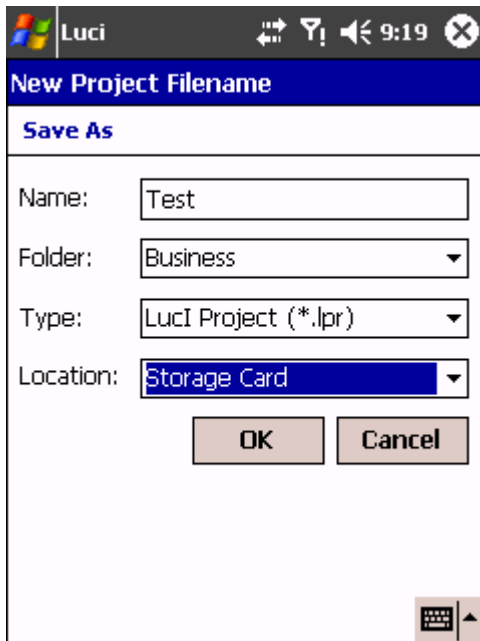


PROJECT



STEP 1

Start up Luci in your Programs Folder

If not registered yet you will see a warning that the software will operate in demo-mode. The demo-mode will interrupt recordings and published files every 10 seconds. This enables you to try Luci before purchasing the full program with its complete features.

You will now enter the 'record'window where you can make recordings.

It is best to make a new project before starting the first recording.
Choose menu File → New Project

Luci will then ask your:

- Name** Type your projects name
- Folder** Select folder in which all project files should be saved
- Type** There is only one type of project to select at this moment
- Location** Decide if you want to save the project files in the Main Memory or storage card for example. The storage card is recommended

If you have set up everything, select OK to confirm the settings and continue, or Cancel to return.